

Issues

MANDATORY BULLETIN No. EV 97 – 001a

1. **REFER TO :** Ultralight aircraft EV-97 EUROSTAR, S/N 9700X3, 980101, 980104, 980105, 980201, 980202, 980203, equipped with the wing folding system
2. **REASON :** It was indidentified, during the aircraft operation, the incorrect pins securing for the fuselage-wing attachment, caused by the violation of pins locking procedure and its inspection
3. **REQUIRED ACTION :** The lower main wing suspension pin has been redesigned to enable the independent locking by the safety system, blocking the pulling out in the case of wrong lock system locking.
It is necessary to change the lower main wing suspension pin from this reason.
4. **LATEST DATE OF THE ACTION:** Immediately
5. **ACTION CARRIED OUT BY :** Operator (owner) in accordance with enclosed sketch and procedure (Enclosure No.1).
6. **INDUCED COST COVERED BY :** Cost for the suspension pins will be covered by the manufacturer.
7. **NECESSARY MATERIAL:** The manufacturer will deliver the 2 pc. of the suspension pins P/N E0 10-24 21 & cotter pins (code 086380).
8. **PROCESS :** Replace the lower main suspension pins by the new designed ones.
Record this replacement into the Log book. Replace the pages in the Aeroplane Maintenance Manual.
9. **ENCLOSURE:** Enclosure No. 1 - Attachment sketch and replace procedure.
Enclosure No. 2 - Pages 1-2, 1-3, 3-6, 3-7 "Aircraft Operation Manual" to replace.

.....
Manufacturer approval

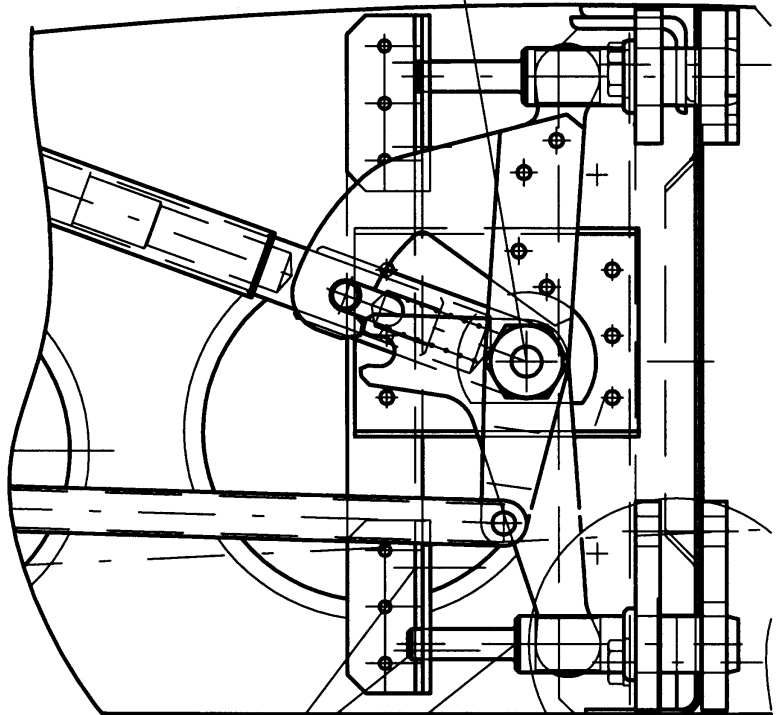
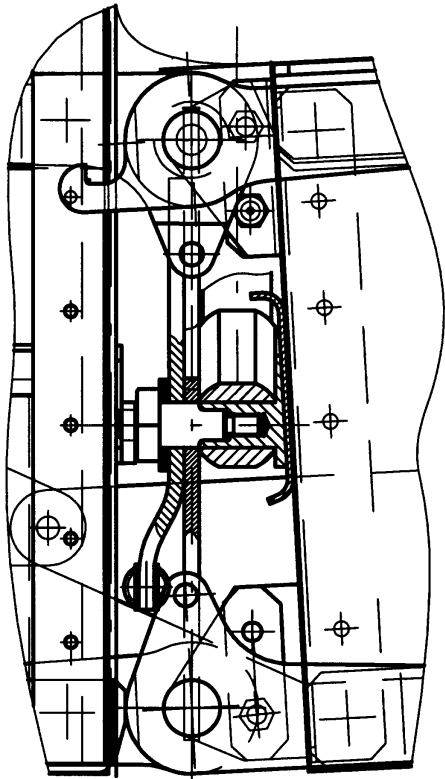
Date: 18.8.1998

.....
Light Aircraft Authority approval

 Date: 31.8.1998

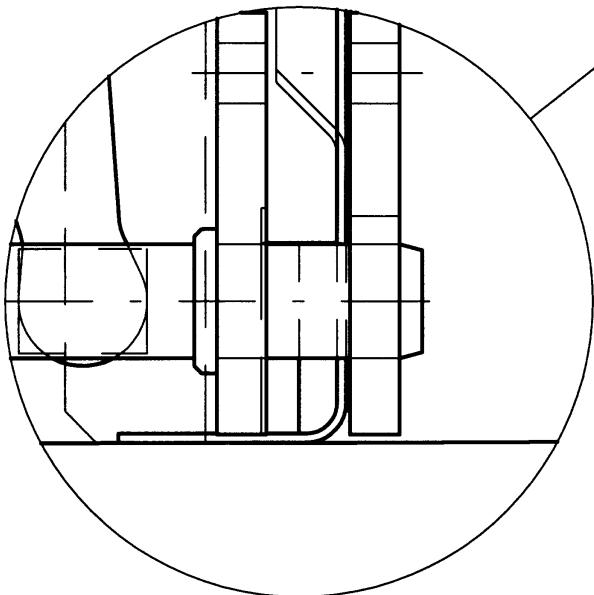
EXECUTE THE REPLACEMENT WHEN WINGS ARE FOLDED

2. CENTRAL BOLT DISMOUNTING
PULLING LEVERS RELEASE

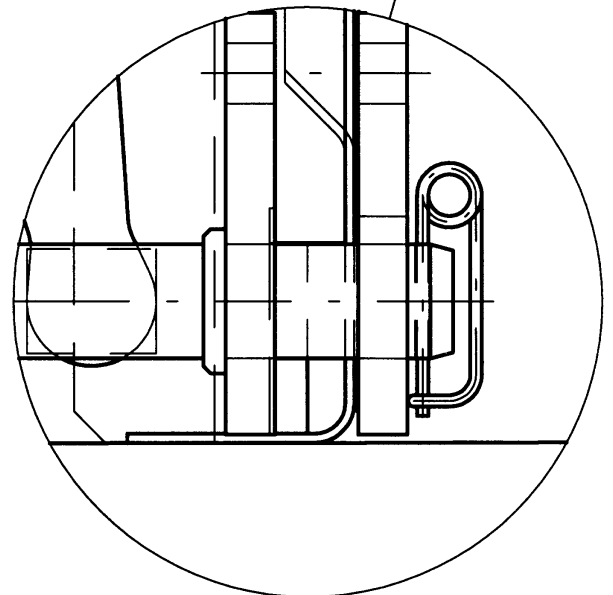


1. TWO M5x14 BOLTS, M5 NUTS AND
5.3. WASHERS DISMOUNTING
RELEASE OF LOWER SUSPENSION PIN LEADING

3. REMOVE THE LOWER PIN. PULL THE NEW PIN ON THE SKITTLE OF THE LOWER LEVER
PUSH BACK TO THE LOWER MOUNTING. TIGHT THE CENTRAL BOLT. SECURE BY THE THREAD
GLUED UP BY THE LOCTITE. TIGHT THE LOWER SUSPENSION PIN LEADING.
KEEP THE CLEANLINES OF THE ATTACHEMENT. GREASE THE MOVEABLE PARTS.
CHECK THE FREE MOTION OF THE MOVEABLE PARTS.



PRIOR THE CHANGE



AFTER THE CHANGE

(LOCKED POSITION, WITH COTTER PIN)