



Issues

MANDATORY BULLETIN No. EV 97 – 005a

1. **CONCERNING TO:** Sports flying equipment EV-97 EUROSTAR (all airplanes up to S/N 2002 1501).
2. **REASON:** Securing screw on the controller or the throttle.
3. **REQUIRED ACTIONS:** Carry out works stated in the enclosure to this bulletin.
4. **LATEST DAY OF THE ACTION:** Immediately upon the bulletin receiving.
5. **ACTION CARRIED OUT BY:** Operator.
6. **COSTS COVERED BY:** Operator.
7. **NECESSARY MATERIAL:** Shown in the bulletin enclosure. It is possible to order it at the airplane manufacturer's.
8. **WORK PROCEDURE:** The detailed procedure is shown in the bulletin enclosure.
9. **ENCLOSURES:** Enclosure: The detailed procedure for securing the screw.
10. **ELABORATED BY:** A. Tvrdoň, Ing. Grebeníček

.....
Manufacturer's Representative

Date: 21.5.2002

.....
LAA Professional Supervision

Date: 21.5.2002



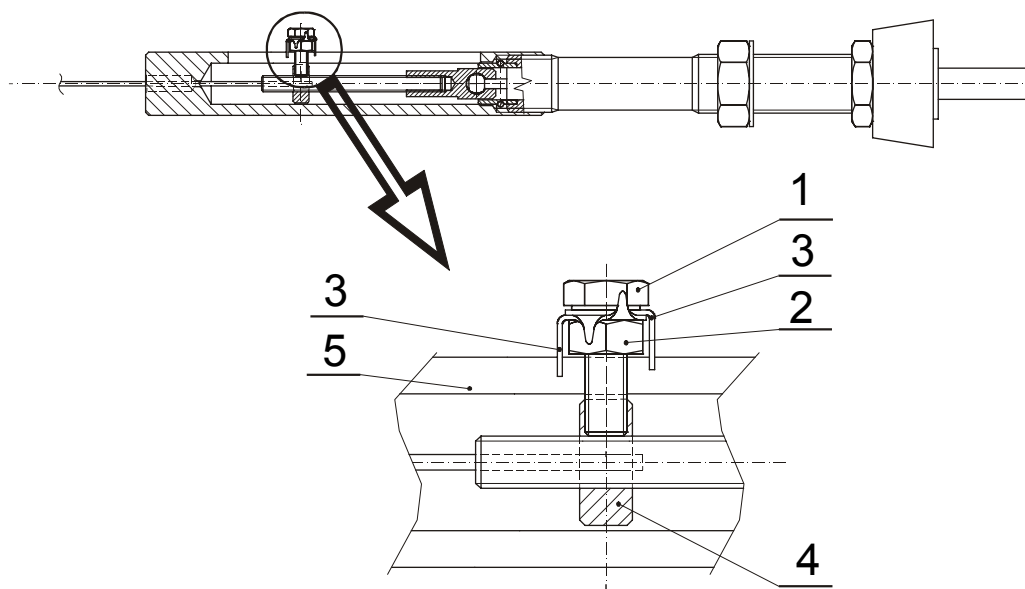


ENCLOSURE

Work procedure

1. Remove sheet metal cover before the instrument panel.
2. Remove the original screw (1) from the throttle controller.
3. Put two washers (3) and screw the nut (2) on the new screw (1) – see the table.
4. Drive the screw into the nut (4) in the throttle controller and tighten it up.
5. Tighten up the screw (1) and the nut (2) against each other.
6. Bend washer tongues (3) according to the picture in such a way that they secure the nut and the screw against mutual releasing. Bend the longer tongue so that it is situated in the groove of the throttle controller and bend both smaller tongues so that one of them secures the nut and the other one the screw against slewing.
7. Check throttle controller on smooth running. Check especially carefully that the nut (2) does not rub by its surface against the controller body (5).
8. Reinstall the upper cover before the instrument panel.

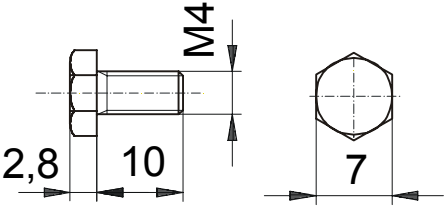
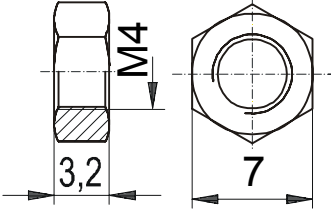
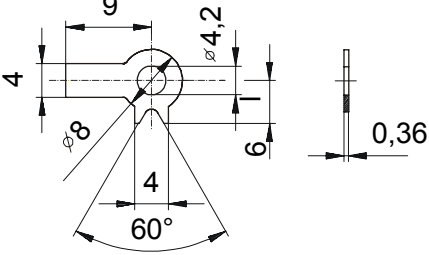
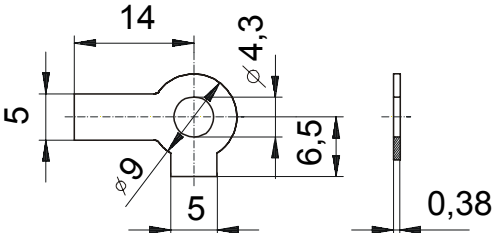
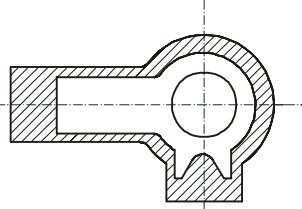
Figure – Scheme of the Throttle Controller



- 1....Securing screw of the throttle control cable
- 2....Nut
- 3....Washers
- 4....Nut
- 5...Controller body



TABLE OF USED PARTS

Figure - dimension in mm	Dimension/Standard	Equivalents
	M4x10 ČSN 02 1103.24	DIN 933-M4x10-5.8-B2G DIN 933-M4x10-8.8-B2G ISO 4017-M4x10-5.8-B2G ISO 4017-M4x10-8.8-B2G
	M4 ČSN 02 1401.25	DIN 934-M4-5-A2G DIN 934-M4-8-A2G ISO 4032-M4-5-A2G ISO 4032-M4-8-A2G
	4,2 ONL 3288.1	DIN 463-4,3-St-A4G It is necessary to carry out the modification according to the figure: DIN463  Modification of DIN 463 washer  Cut off the hatched section according to the dimensions of the washer ONL 3288.1

END